



前宏科技
QIANHONG TECHNOLOGY



BUSINESS BROCHURE

CREATION, INNOVATION AND REFINEMENT



CATALOGUE

THE INTRODUCTION OF OUR GROUP

enterprise introduction

Chengdu Qianhong Communication Co., Ltd. is located in Xindu District, Chengdu City, is founded in 1995. Under the strong support of the local government, after nearly 30 years of continuous development, Chengdu Qianhong Communication Co., Ltd. stands out from the industry and has become the development model of contemporary China's communication equipment manufacturing industry and won the national high-tech innovation enterprise.

The company adopts the world's most advanced production equipment, specializing in the production and sales of all kinds of communication network engineering cabinets and optical fiber broadband series products, 3G,4G,5G base station supporting products, uphold the "innovation, creation, refinement" philosophy, product sales have been throughout many regions at home and abroad, into: The United States, Colombia, Brazil, Mexico, Jordan, Pakistan, Saudi Arabia, Italy, Turkey, the United Arab Emirates, Thailand and other more than 100 countries in the world, has established a good cooperative relationship, and achieved excellent results.

The company covers an area of 30,000 square meters, the existing staff of more than 300 people, all kinds of professional technical and management personnel more than 200 people, registered capital of 102 million yuan, the chairman Mr. Zhao Gang with its "detailed foresight and innovation ability" and "quality campaign" thought leading Chengdu Qianhong in the communications manufacturing industry with good reputation and quality service in the industry has a good reputation.

The company has advanced management system, each series of products have passed the ISO9001, TLS, SGS, SA8000 certification, SA8000 social responsibility standard certification, the use of international Meteor ERP (manufacturing resource planning system), 7S management system, to ensure that the cost of each product is reasonable, Stable quality and reliable performance.

In line with the service tenet of "serving customers wholeheartedly, ensuring customer satisfaction", we provide users with fast, convenient, efficient and professional technical support and after-sales service, which maximally removes the worries of operators.

In order to further enhance the company's corporate image, shape the industry brand, improve brand influence and competitiveness, the company designed a new trademark

Qianhong used the trademark before:



and



Trade mark in use:



02 PRODUCTION SECTION

INJECTION MOLDING CENTER

16~17
million pieces
ANNUAL OUTPUT

60000+
pieces
DAILY OUTPUT

0.5~0.8
mm
THE MINIMUM THICKNESS OF
THE PRODUCT CAN BE FORMED

≤0.08
mm
INJECTION MOLDING TOLERANCE

0.01g~10000g
RANGE OF CAPABILITIES TO
GENERATE PRODUCTS

HAITIAN 1000T INJECTION
MOLDING MACHINE



HAIXIONG 688T INJECTION
MOLDING MACHINE



HIGH PRECISION INJECTION
MOLDING MACHINE



ROBOTIC ARM



CNC PLASTIC INJECTION
MOLDING MACHINE



AUTOMATIC INJECTION
MOLDING LINE



SEMI-AUTOMATIC INJECTION
MOLDING LINE



METAL PLATE CENTER

- 2000+
Set of
Monthly output of municipal
garbage bins
- 1000
Set of
Monthly output of outdoor
communication cabinet
- 2000
Set of
Monthly output of various IOL cabinets
- 500
Set of
Monthly output of medical carts,
tools and bedding
- 300
Set of
Monthly output of AC man-machine
interface series control cabinet
- 300+
Set of
Monthly output of bullet train
supporting products

METAL CUTTING AND PUNCHING MACHINES

TRUMPF laser cutting machines imported from Germany x 2sets
CNC machining equipment x 2sets



METAL BENDING MACHINES

Among them, SALVAGNINI(S2+P2) imported from Italy x 1set

HEAT SHRINKABLE PRODUCT CENTER



PRODUCTION EQUIPMENT

Advanced Fiber Mesh Textile Machine
Automatic Thickness Measuring Compound Extrusion Set
Hot Melt Adhesive Coating Set
Continuous Tube Extrusion And Expansion Set, and
Other Key Production Equipment

HEAT SHRINKABLE SLEEVE

2000
Square meter
Daily Production Capacity

Max. Width 860mm
Max. Length 1500mm

HEAT SHRINKABLE TUBE

4000 ~ 8000
Meter
Daily Production Capacity

Glue Coating Method
Flat Glue, Spiral Glue
To Meet Different Requirement

MOLDING



Management
experience

Mold processing center has
rich management experience
in mold design, product design,
product project development
and design

Software
auxiliary

CAD, SolidWorks, MoldFlow
and other software are used to
assist design and mold flow
analysis

Structure

Reduce defects in product design and
mold and optimize mold structure

Period

Shorten product and mold development
cycle

Quality

Improve product quality and stability

Ability

Rich design and processing ability

HEAT SHRINKABLE SPLICE CLOSURE

Heat shrinkable composite joint closure system for environmental and mechanical protection of joints are widely used in overhead erection of pipeline, the splice closure of buried and submarine communication cable; can work under an environment from -30°C to 90°C for a long time



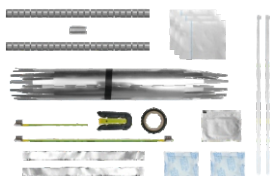
RSBJ(F)500 SERIES

Heat shrinkable joint closure for non-pressurized telephone cable networks



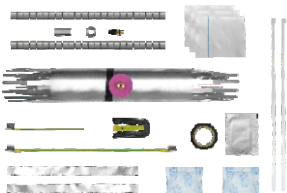
RSBJ(F)550 SERIES

Heat shrinkable joint closure for non-pressurized telephone cable networks



RSBAQ(F) 1000 SERIES

Heat shrinkable joint closure for pressurized telephone cable networks





AERIAL CABLE JOINT CLOSURE



Aerial cable joint closure, also called self supporting aerial cable closure or aerial free breathing mechanical joint closure. It is free breathing and suitable for straight, butt, and branch splices of non-pressurized communication cables. The one piece construction permits complete splice access, without removal of the closure or bonding of the cables.

The closure consists of closure body, end seals and other essential components. The closure body is a lightweight, double-walled and molded plastic housing. It is weather and ultraviolet ray resistant. The durable housing will not crack or break in even the harshest environment.

KIT COMPONENTS:

- Closure Body
- End seals(2 pieces)
- Ruler (1 piece, to measure the circumferential length of cables)
- Nylon cable ties (2 pieces)
- Shield continuity wire and connector (1 kit)
- PVC tape (1 roll)
- Joint wrap tape (1 roll)

Specification	Closure Outer Dia. X Closure Overall Length (mm)	Max. Opening Length (mm)	Max. Splice Dia. (mm)	Cable Dia.		Applicable Cable Pairs (wire gauge) 0.4mm~0.5mm	FOB PRICE, USD
				Main Cable (awg)	Branch Cable (up to two branches) (awg)		
SLIC 45/18-200 (2*12)	70*350	250	45	13	15	10-50	3.82
SLIC 56/25-350 (2*19)	90*475	356	56	10	12	50-150	6.1
SLIC 66/30-500 (3*33)	100*560	493	66	8	10	200-400	11

Remarks: Customized products accept.



HEAT SHRINK CABLE REPAIR SLEEVE



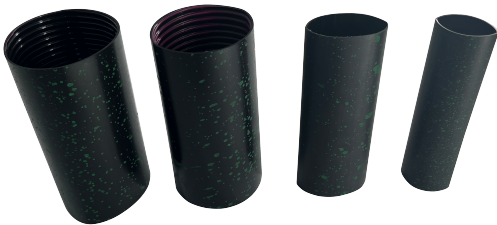
Heat Shrink Cable Repair Sleeve is designed to repair quickly damaged cable jacketing. This is not a high-tech product, but the production process is indeed quite complex and cumbersome, requiring rich production experience. Suitable for repairing and protecting damaged cable sheaths, the product is aesthetically pleasing and easy to install. Has good insulation and crack resistance.

Specification	Splice bundle dia. Max.(mm)	Single cable dia.Min. (mm)	Sleeve Length
43/8-1000	43	8	150
55/12-1000	55	12	300
62/22-1000	62	22	350
75/15-1000	75	15	300
75/15-1000	75	15	500
125/15-1000	125	30	500
160/42-1000	160	42	500

PS: The size can be customized according to customer requirements



HEAT SHRINK TUBE



Use low density crosslinked polyethylene material through extrusion, crosslinked irradiation, expansion, gluing and other processes;
Special polyethylene material with high strength mechanical properties;



FEATURES

- Initial shrinkage temperature
- Full shrinkage temperature
- Operating temperature
- UV resistant and soft
- Environmental protection standard
- Shrinkage ratio

Description	Inner Dia. (mm)	Size After Full Shrinkage(mm)			Standard Package
		Inner Dia.	Average Wall Thickness	Glue Thickness	Meter/Piece
Φ12.7	≥12.7	≤4.2	1.55±0.40	0.75±0.20	1.22
Φ15	≥15	≤5.2	1.65±0.40	0.75±0.20	1.22
Φ19	≥19	≤6.3	1.90±0.40	0.85±0.20	1.22
Φ25	≥25	≤7.5	2.00±0.40	0.90±0.20	1.22
Φ30	≥30	≤6.0	2.05±0.40	0.90±0.20	1.22
Φ33	≥33	≤8.0	2.05±0.40	0.90±0.20	1.22
Φ45	≥45	≤12	2.5±0.40	0.90±0.20	1.22
Φ65	≥65	≤15	2.5±0.40	0.90±0.20	1.22

PS: The size can be customized according to customer requirements



HEAT SHRINK END CAP



Heat shrink cable cap, also known as heat shrink cap, is a material specifically used for sealing and protecting tubular ends. Polyolefin polymer materials undergo free radical electron withdrawing cross-linking to produce memory effects, and thermal shrinkage sealing relies on this principle to generate thermal shrinkage. Heat shrink caps are mainly used on cables. Cover the exposed areas at both ends of the cable with heat shrink caps, and then heat shrink to complete the installation.

FEATURES

- Coated with hot-melt adhesive to ensure reliable seal of cable ends
- Continuous operation temperature: -45°C to 105°C
- Shrink temperature: start at 110°C, and fully recovered at 130°C
- Shrink ratio: 2:1

Size	D/mm		L/mm	W/mm	
	As supplied	After recovery		As supplied	After recovery
11/6	≥11	≤6	≥22	0.7±0.1	≤1.1
16/8	≥16	≤8	≥70	1.2±0.1	≤2.2
20/8	≥20	≤8	≥70	1.2±0.1	≤2.2
25/11	≥25	≤11	≥80	1.2±0.1	≤2.3
75/36	≥75	≤36	≥80	1.2±0.1	≤2.3
100/52	≥100	≤52	≥80	1.2±0.1	≤2.3

PS: The size can be customized according to customer requirements



COLD SHRINK TUBES



Cold Shrink Tubes are a series of open-ended, tubular rubber sleeves, which are factory expanded and assembled onto a removable core. They are supplied for field installation in this pre-stretched condition. The core is removed after the tube has been positioned for installation over an in-line connection, terminal lug, etc., allowing the tube to shrink and form a waterproof seal. The insulating tube is made of EPDM rubber, which contains no chlorides or Sulphur.

SPECIFICATION

Model	Spec.	Advailable cable dia. Min-Max	Tube length after shrink
QH-LSHC05	mm	mm	mm
	φ25*120	7 ~ 20	120+5
	φ25*110	7 ~ 23	110+5
	φ40*140	11 ~ 33	140+5
	φ45*140	12 ~ 38	140+5
Color		Black or Grey	



WATERPROOF CABLE JUNCTION BOXES



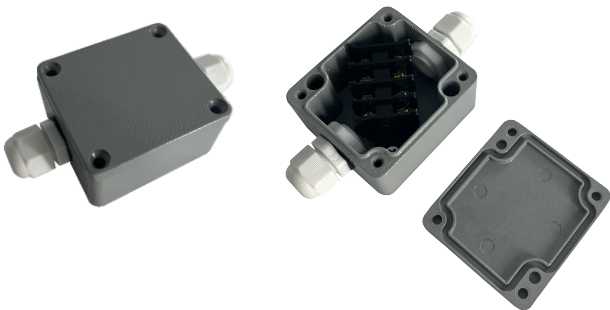
The development of waterproof cable junction boxes is closely related to the requirements for buried wires and cables, communication cables, and signal cables in urban power and communication construction. Therefore, it is important to propose solutions for branching, connecting, waterproofing, and other aspects of cables. Waterproof cable junction boxes have different names due to regional differences and different scopes of use. They are mainly used in industries such as waterproof junction boxes, waterproof instrument boxes, waterproof photovoltaic junction boxes, etc. Waterproof boxes are mainly suitable for indoor and outdoor electrical, communication, fire protection facilities, steel smelting, petrochemical, electronics, power, railways, construction sites, mines, mining sites, airports, hotels, ships, large factories, coastal factories, unloading dock equipment, and wastewater treatment facilities. Environmental pollution facilities, etc.

Models	Applicable cable range (mm)	Outside diameter of spiral (mm)	Spiral Length
M12*1.5/PG7	3-6.5	12.6	8
M16*1.5/PG9	4-8	15.1	8
M18*1.5/PG11	5-10	18.6	9
M20*1.5/PG13.5	6-12	20.3	9
M22*1.5/PG16	10-14	22.5	10
PG19	12-15	23.7	10
PG21	13-18	28	12

PS: The size can be customized according to customer requirements



ALUMINUM DIE CAST JUNCTION BOXES



Aluminum die cast junction boxes can provide a safe environment for connecting wires and cables, to protect wire connection points from external environmental factors such as moisture, dust, etc. This can ensure the stability and long-term reliability of the connection point, and reduce the failure rate. At the same time, junction boxes can effectively manage wires, make their wiring neat and orderly, reduce entanglement and crossing between wires, and reduce the risk of faults caused by short circuits or poor contact between wires.

Models	L*W*H(mm)	Trepanning	Terminal	Cable gland
YX-FA1	64*58*35	In and out PG11	TBC10A4	Metal joint
YX-FA18	80*76*57	In and out PG11	Tb3504	
YX-FA18	80*76*57	One in, two out PG11	Tb3504	
YX-FA18	80*76*57	Two in, two out PG11	Tb3504	
YX-FA18	80*76*57	One in, two out PG9	TBC10A-6	
YX-FA2-1	120*80*55	Two in, two out PG9	TBC10A-11	

PS: The size can be customized according to customer requirements

01



4MP HD outdoor smart battery camera QH-HD40TQ4-WIFI

FEATURES



- Support HD 4MP (2560x1440) high quality resolution
- Adopting the latest H.265 encoding and compression technology
- Support Pan and tilt rotation.
- Build in AI algorithm
- Support for linked alarm audio during regional intrusion
- Support wireless network 2.4G/5G access
- Support three night vision modes: full color, intelligent, and infrared

02



4MP outdoor smart bullet camera QH-HD40XQ64-POE

FEATURES



- Support max. 4MP (2560x1440) resolution
- Adopting the latest H.265 encoding and compression technology
- Support remote monitoring and control by mobile apps
- Build in AI algorithm
- Support for linked alarm audio during regional intrusion
- Support three night vision modes: full color, intelligent, and infrared

03



3MP HD indoor smart dome camera QH-HD30SQ2

FEATURES



- Support HD 3MP (2048x1536) high quality resolution
- Adopting the latest H.265 encoding and compression technology
- Support Pan and tilt rotation.
- Build in AI algorithm
- Support for linked alarm audio during regional intrusion
- Support WIFI network access
- Support one-click alarm

04



4MP HD outdoor smart dome camera QH-HD40WQ14-POE

FEATURES



- Support HD 4MP (2560x1440) high quality resolution
- Adopting the latest H.265 encoding and compression technology
- Support remote monitoring and control by mobile apps
- Build in AI algorithm
- Support for linked alarm audio during regional intrusion
- Support three night vision modes: full color, intelligent, and infrared

01



4MP HD outdoor smart battery camera QH-HD40TQ4-WIFI

FEATURES



- Support HD 4MP (2560x1440) high quality resolution
- Adopting the latest H.265 encoding and compression technology
- Support Pan and tilt rotation.
- Build in AI algorithm
- Support for linked alarm audio during regional intrusion
- Support wireless network 2.4G/5G access
- Support three night vision modes: full color, intelligent, and infrared

02



4MP outdoor smart bullet camera QH-HD40XQ64-POE

FEATURES



- Support max. 4MP (2560x1440) resolution
- Adopting the latest H.265 encoding and compression technology
- Support remote monitoring and control by mobile apps
- Build in AI algorithm
- Support for linked alarm audio during regional intrusion
- Support three night vision modes: full color, intelligent, and infrared

03



3MP HD indoor smart dome camera QH-HD30SQ2

FEATURES



- Support HD 3MP (2048x1536) high quality resolution
- Adopting the latest H.265 encoding and compression technology
- Support Pan and tilt rotation.
- Build in AI algorithm
- Support for linked alarm audio during regional intrusion
- Support WIFI network access
- Support one-click alarm

04



4MP HD outdoor smart dome camera QH-HD40WQ14-POE

FEATURES



- Support HD 4MP (2560x1440) high quality resolution
- Adopting the latest H.265 encoding and compression technology
- Support remote monitoring and control by mobile apps
- Build in AI algorithm
- Support for linked alarm audio during regional intrusion
- Support three night vision modes: full color, intelligent, and infrared

COOPERATION

Honesty, cooperation
and sharing honor

Brand strategy serves the whole world



CATALOGUE

Tel: +86-28-83080722

E-mail: overseas@qhtele.com

Web: <http://www.qhtele.com>

Post code: 610500

Address: No.666 Xingye Road, Xindu Town, Xindu District, Chengdu, Sichuan
Chengdu Qianhong Communication Co., Ltd.